

VALLEY BONSAI SOCIETY

SEPTEMBER 2021

Livermore, California

MISSION: To encourage and equip each other as we share a common interest and enjoyment of Bonsai and to encourage others to explore this art form.

[HTTP://WWW.VALLEYBONSAISOCIETY.COM](http://www.valleybonsaisociety.com)

IN THIS ISSUE:

- WHAT IS THE VALLEY BONSAI SOCIETY
- MEETINGS
- NEWSLETTER, EMAIL LIST AND WEBSITE
- MEMBERSHIP
- SEPTEMBER MEETING
- OCTOBER MEETING
- UPCOMING EVENTS
- SENPAI CORNER
- ELECTIONS
- TIDBITS
- THANK YOU ALDEN LANE
- VALLEY BONSAI SOCIETY OFFICERS & CONTACTS

WHAT IS THE VALLEY BONSAI SOCIETY?



50 weeks.

Founded in February 2008 by Charles Harder, this organization was established to create a group of local Bonsai enthusiasts with all level of expertise. Many of us started by taking one or more of Charles's classes, some received a plant as a gift and some had been struggling on their own. We currently have some people with extensive collections; some have trained trees as long as 50 years and some are still trying to get a tree to survive

MEETINGS

The club meets at Alden Lane every third Saturday of the month at 2:00PM. Everyone is welcome!

NEWSLETTER, EMAIL LIST AND WEBSITE

An email list is maintained to release announcements and send out an electronic newsletter. Please send a request to be added to (or removed from) this list via e-mail to Charles Harder (bonsainut@comcast.net). We have a website! Visit us at www.valleybonsaisociety.com

We have a website! Visit us at www.valleybonsaisociety.com. Follow us on Facebook: <https://www.facebook.com/ValleyBonsai> or Instagram: https://www.instagram.com/Valley_Bonsai_Society

MEMBERSHIP

Membership is open to anyone who shares an interest in the ancient oriental horticultural art of Bonsai. The annual dues are \$30 a year for an individual or \$40 for couples or families. If you would rather not pay for a membership, you have the option of paying \$5.00 per visit. If you have questions regarding membership or would like to join, please contact Bea Bauerly BelgianBea@yahoo.com

SEPTEMBER MEETING BY CHARLES



Our September meeting consisted of building a quick and simple saikei with a one-gallon juniper I picked up right before the meeting.

With a couple of well-placed rocks and a high-speed styling of said juniper, I was able to finish it. Yes Bea, I need to work at the same pace at our show demo.



We also discussed making muck. Muck is a paste that is used to “glue” rocks in place. Gerardo posted the video I made on the homemade recipe for muck on our Facebook page, so please check it out.

OCTOBER MEETING BY CHARLES

At our October meeting, I will talk about repotting. Now that fall has started, which means the second growth spur period of the year is underway, it is an opportunity to repot.

Those trees that I have been suggesting to hold off repotting until late summer or early fall can now be repotted. This meeting will be a good time to bring them. I will bring soil for those that might need some. I hope to see you all there.

UPCOMING EVENTS

October 2 and 3, 2021 Santa Nella, California

Golden State Bonsai Federation (GSBF) will host the 2021 GSBF Bonsai Rendezvous. The event theme is “Bonsai Rendezvous.” A two-day event for renewal and celebration for the love of bonsai. No registration fee. Open to the public. Free bonsai demonstrations both days. Free professional bonsai critiques, Bring Your Own Bonsai and Do It Yourself Bonsai settings. Vendors from Northern and Southern California in one huge location. There will be silent auctions for quality bonsai and related items. There will be no banquet

dinners. Additional information and schedule of activities forthcoming shortly. Stay tuned to [GSBF website](#). For further information or to volunteer in support of the event, contact Rich Guillen at richguillen@att.net or call 831-233-1612.

October 16 and 17, 2021 Union City, California

YAMATO BONSAI KAI 50th Annual Exhibition: Saturday from 11:00 am until 5:00 pm. and Sunday from 10:00 am. until 5:00 pm at the Southern Alameda County Buddhist Church.

Location: 32975 Alvarado-Niles Rd., Union City, CA 94587.

Exhibition of bonsai trees, plant sales, and vendors. Free admission and free parking. Demonstration by Sensei Johnny Uchida both days at 1:30 pm with demonstration tree raffled off as grand prize. For more info and updates find us on Facebook by searching "Yamato Bonsai Kai".

SENPAI CORNER BY CHARLES

We are beginning to march steadfastly into fall. (However, my plum doesn't seem to recognize that – it is blooming again) - Do not be alarmed if the leaves on your maple tree start to turn brown and fall off, that is what they do. As the leaves drop and the weather turns, stay vigilant about keeping the soil in your pots tidy as leaves can hide insects and molds. Plus, even though the days are getting cooler – Ha! It's supposed to get into the 90's this weekend... remember to stay on top of the watering, as a warm day and wind could really dry out your tree. I would also still encourage you to fertilize until mid to late November, as your trees will need the nutrients getting ready for winter.

ELECTIONS

Positions on the Board are still available. Please contact Bea if you are interested.

TIDBITS BY BEA

The last couple of meetings have been so enjoyable with many new faces. After being cooped up for so many months, it is nice to have an outdoor activity to share with others where you can learn and socialize.





I came across this cute idea for Bonsai..so I am challenging all of you to make some of these....we have plenty of little pots, so don't be afraid to ask.

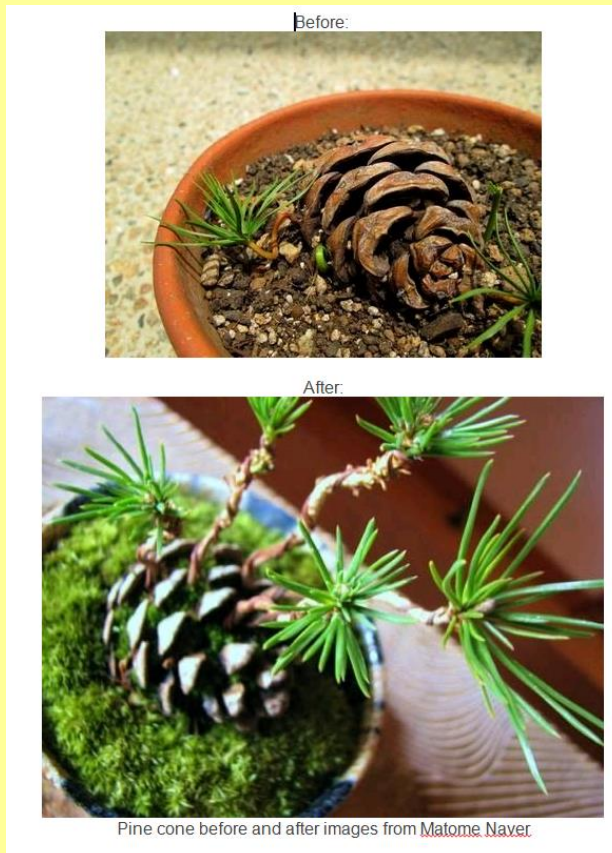
How to grow your own Pinecone Bonsai

1. To grow your own pinecone bonsai, you will first need to find a pinecone that is young and fresh and that has not opened. This is because you need one that still has its seeds. Also, pinecones from a Japanese Black Pine work great perfect for this project.

2. Try to find a pinecone that is on the larger size; this will help to assure that the seeds inside are of better quality. It is also best to collect a few pinecones and not just one!

3. Some folks recommend giving your pinecones a quick bath in a solution of very diluted lime-sulfur solution before starting this project. That is just an extra step that will help get rid of any pests or fungus that is living in the pinecone.

4. Next you will need to dry out your pinecones, so place them in a dry spot and watch as they begin to dry out and open up. You may see some of the seeds begin to come out. At this point, you can give the pinecones a few taps to help loosen seeds if you want to plant the seeds outside of the



pinecone. The darker seeds will be of better quality.



Japanese Black Pine mini bonsai by [Vertmoi](#)

5. If you want to grow the seeds directly from inside the pinecone you will next place your pinecone in your prepared soil. Loosely bury bottom of pinecone only, do not bury the entire pinecone! From this point you will water it sparingly and wait for it to sprout - do not over-water or it will rot. That is all there is to it!

I am looking forward to see who it going to be successful in growing these. It could also be something we could sell at our annual show.

THANK YOU ALDEN LANE



Alden Lane Nursery

981 Alden Lane
Livermore, CA 94550
(925) 447-0280
www.aldenlane.com

Thanks to Alden Lane for allowing us to meet for free at the nursery. Alden Lane Nursery has evergreen and blooming trained Bonsai specimens in many sizes for indoors and outdoor gardens. Stop in and let one of the Bonsai experts help you design your own Bonsai masterpiece from the selection of Bonsai pots and starter plants. They also carry Bonsai tools and enough useful Bonsai accessories to satisfy even the most dedicated bonsai tree hobbyist.

The nice thing about meeting at Alden Lane is that you have the opportunity to not only pick up bonsai stock and supplies but to shop under the oaks amongst one of the most extensive offerings for your home and garden. Inspiration and beauty abounds wherever you look along with the friendly, knowledgeable staff of Alden Lane. Do not forget to say THANK YOU for the incredible support!

SOCIETY OFFICERS AND CONTACTS

President	Charles Harder	bonsainut@comcast.net
Vice President	Open Position	
Secretary	Bea Bauerly	BelgianBea@yahoo.com
Treasurer	Bea Bauerly	BelgianBea@yahoo.com
Membership	Bea Bauerly	BelgianBea@yahoo.com
Fund Raising	Open Position	
Newsletter	Charles Harder	bonsainut@comcast.net
Website	Bill Bauerly	Bill46@pacbell.net

If you need to contact any of the above, please make sure to reference "Valley Bonsai Society" in the subject line.